



EAT. MEET. SLEEP.

Exceptional made simple.

**HARPER, SCHRAMM,
SMITH & VILLAGE
MEETING SPACES**

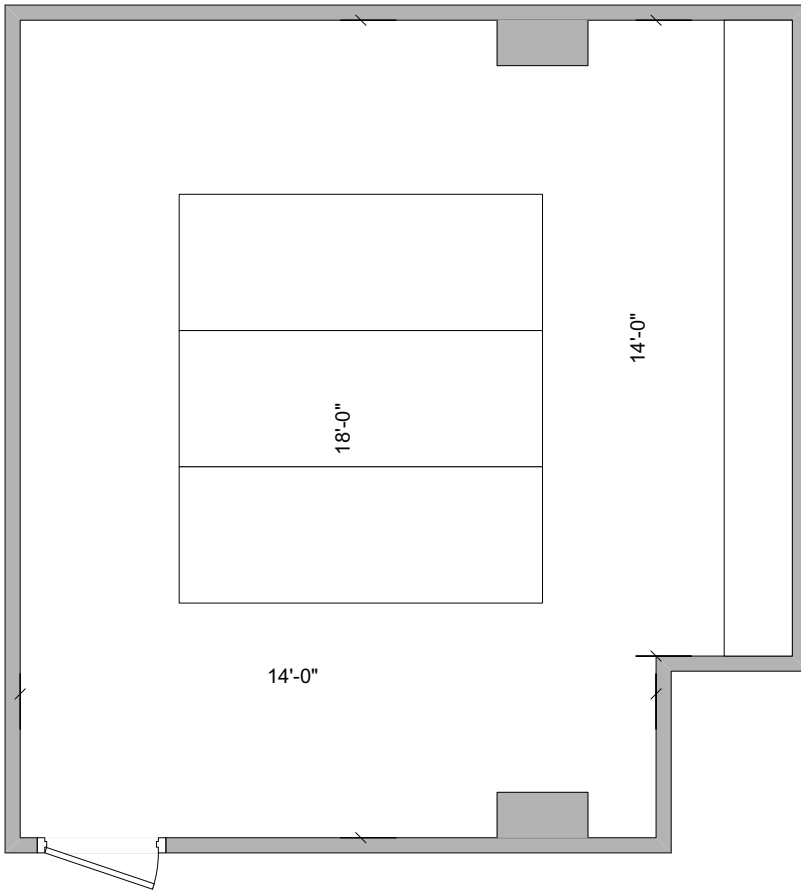


**CONFERENCE
SERVICES**

UNIVERSITY OF
Nebraska
Lincoln

..... 800-809-8681 » conferenceservices.unl.edu

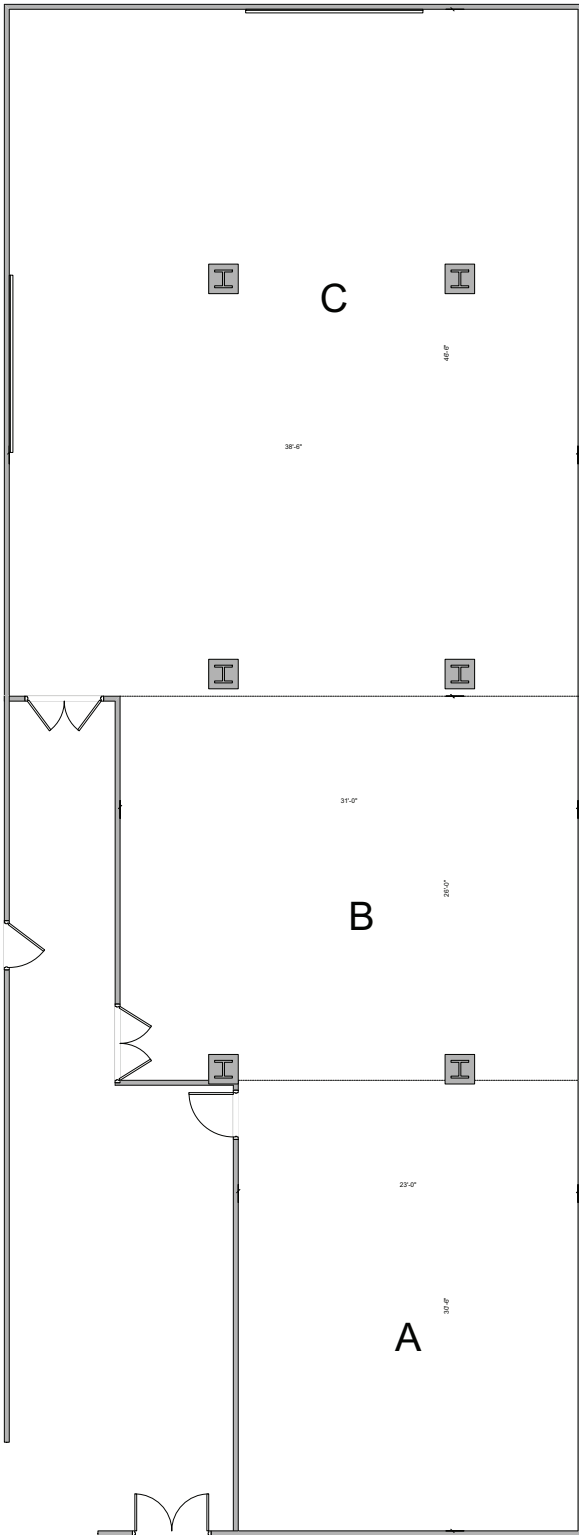
HARPER CONFERENCE ROOM



Room Information:

Location: Harper Residence Hall
Type: Conference Room
Square Footage: 252
Dimensions: 14' x 18'
Amenities: Conference table
Seating for up to 16
Dry erase board

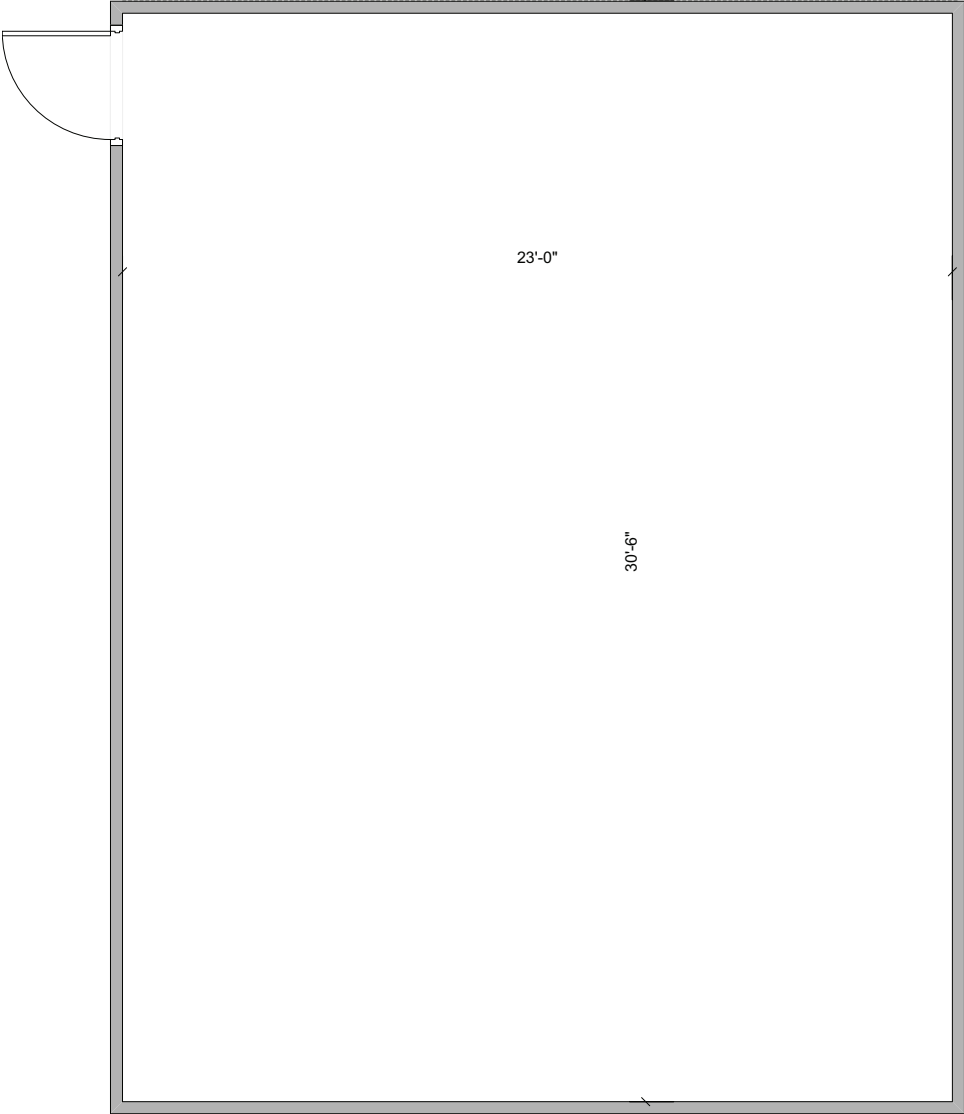
HARPER DINING CONFERENCE ROOM



Room Information:

Location: Harper Dining Center
Type: Multipurpose Room
Square Footage: 3914
Dimensions: 38' x 103'
Amenities: LCD projector
Smart cart
Pull down screen
Dry erase board

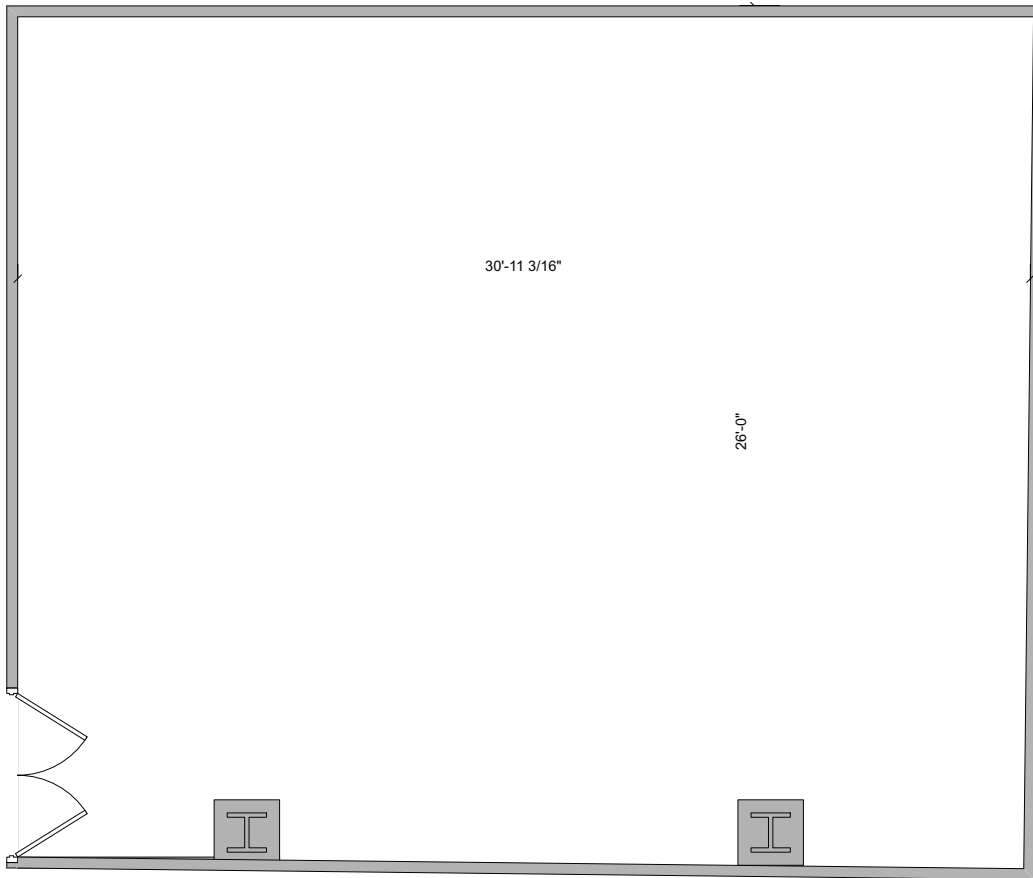
HARPER DINING CONFERENCE ROOM A



Room Information:

Location: Harper Dining Center
Type: Multipurpose Room
Square Footage: 690
Dimensions: 23' x 30'
Amenities:

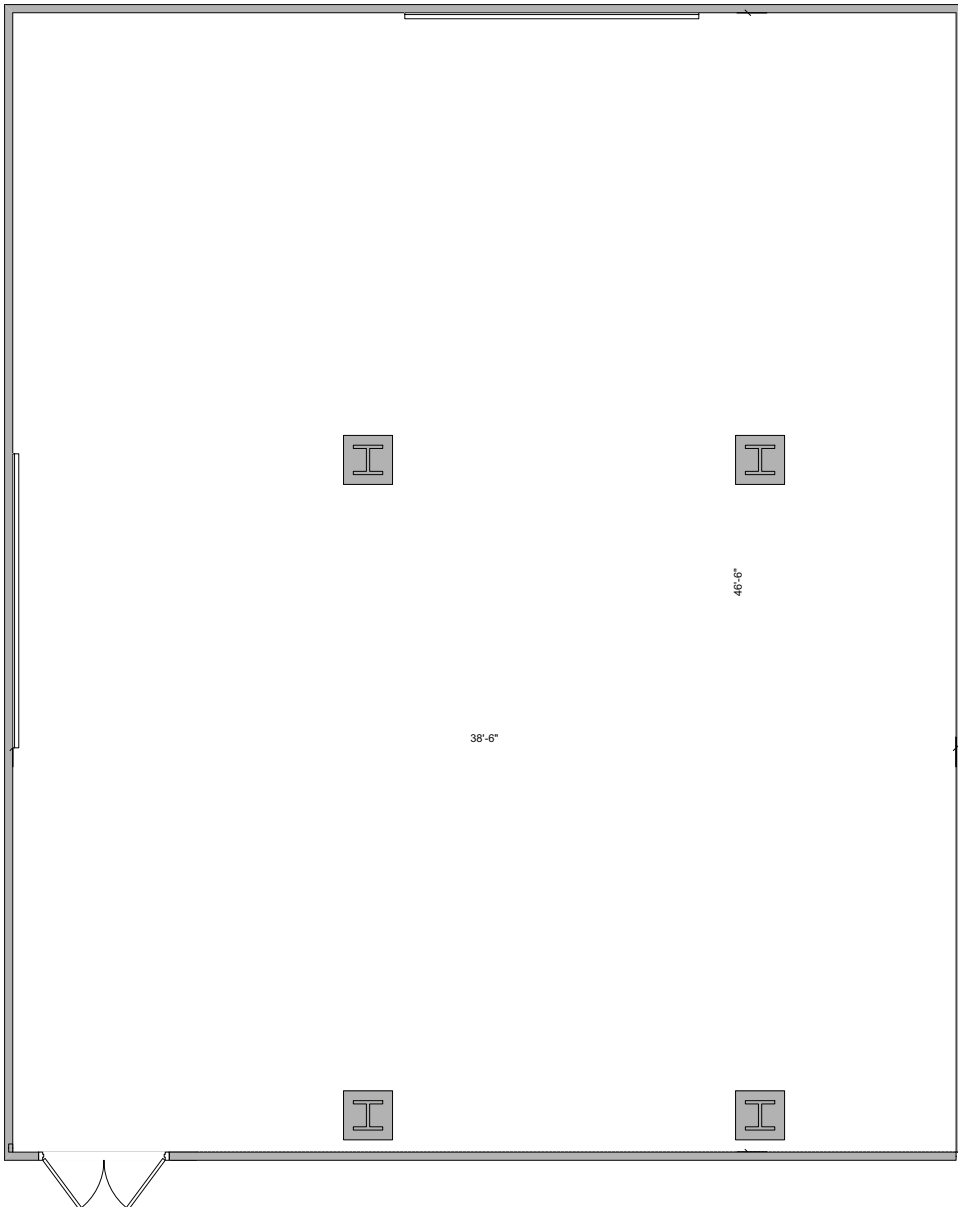
HARPER DINING CONFERENCE ROOM B



Room Information:

Location: Harper Dining Center
Type: Multipurpose Room
Square Footage: 806
Dimensions: 26' x 31'
Amenities:

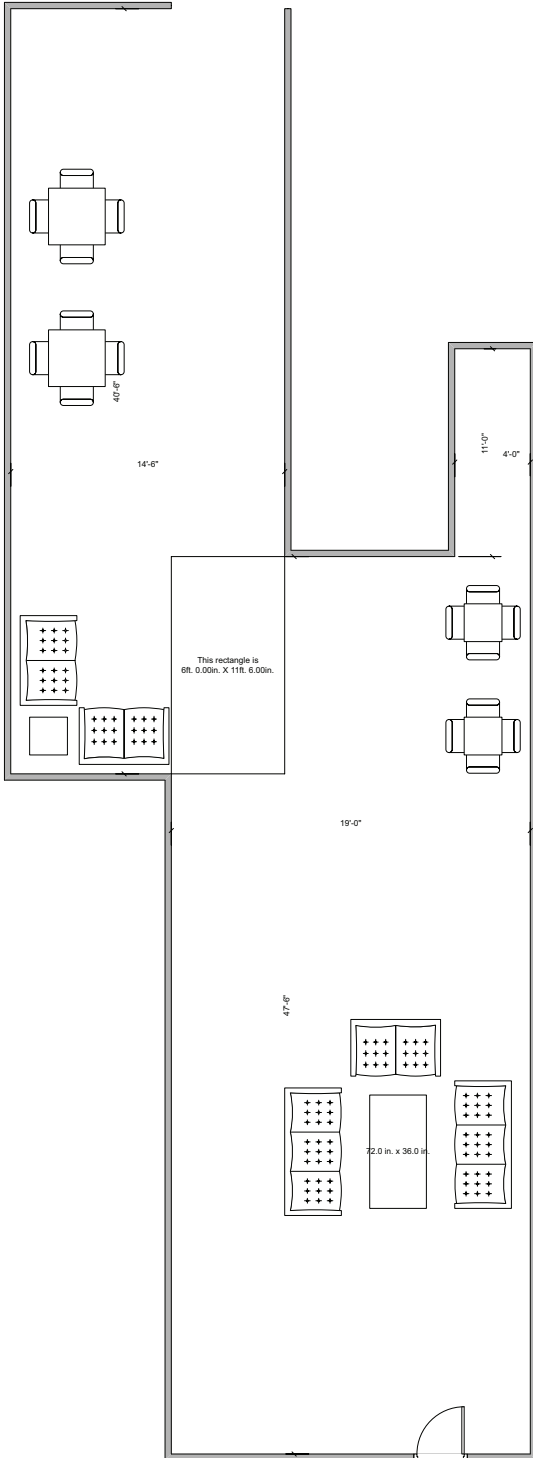
HARPER DINING CONFERENCE ROOM C



Room Information:

Location:	Harper Dining Center
Type:	Multipurpose Room
Square Footage:	1748
Dimensions:	38' x 46'
Amenities:	LCD projector Smart cart Pull down screen Dry erase board

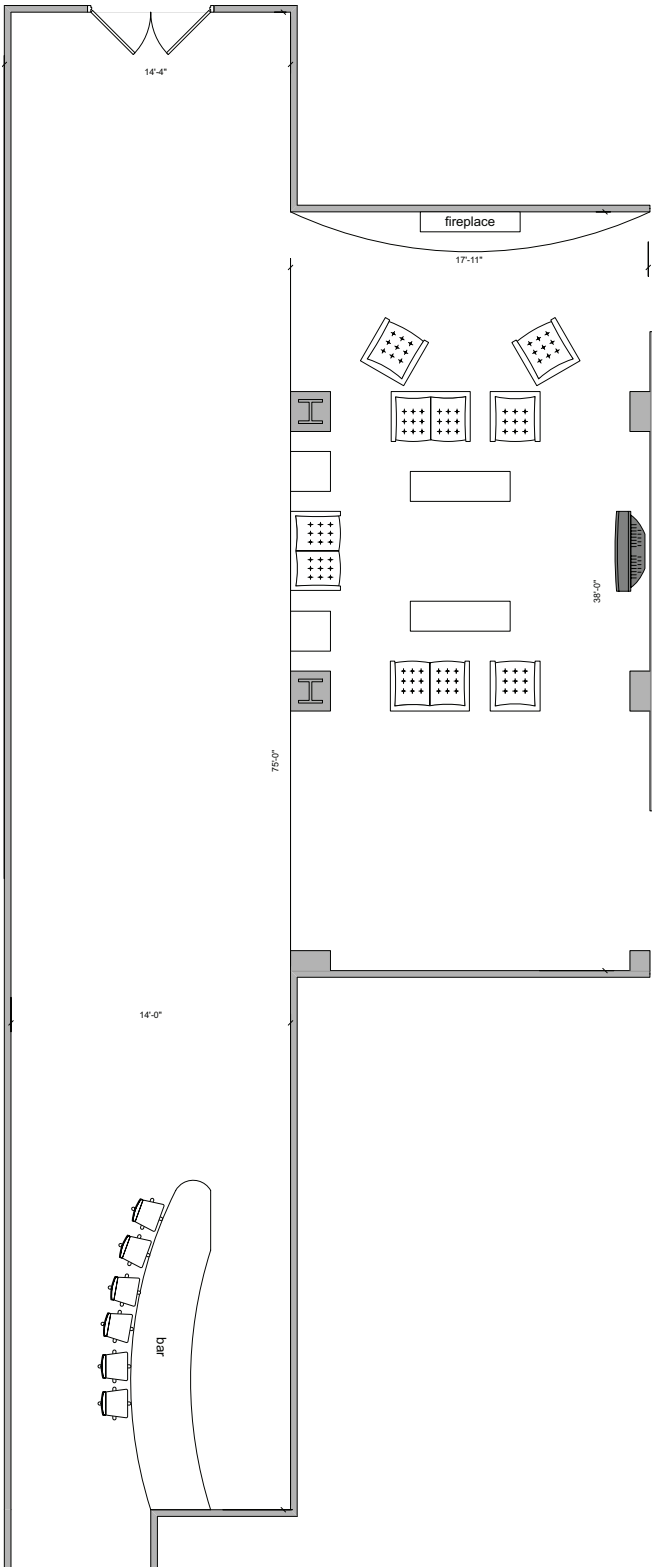
HARPER DINING LOBBY



Room Information:

Location: Harper Dining Center
Type: Multipurpose Room
Square Footage: 1537
Dimensions: 19' x 47' and 14' x 40'
Amenities: Comfortable seating
Small tables with chairs

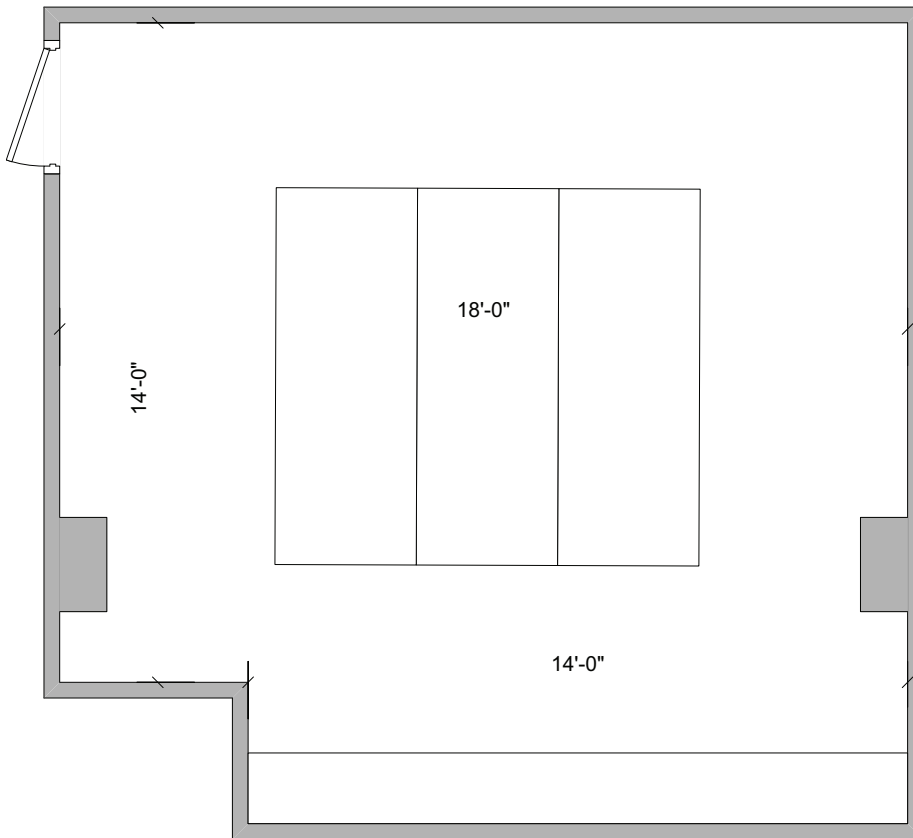
HARPER LOUNGE



Room Information:

Location: Harper Hall
Type: Multipurpose Room
Square Footage: 1216
Dimensions: 32' x 38'
Amenities: Comfortable seating
Small tables with chairs
Big Screen TV
Fireplace

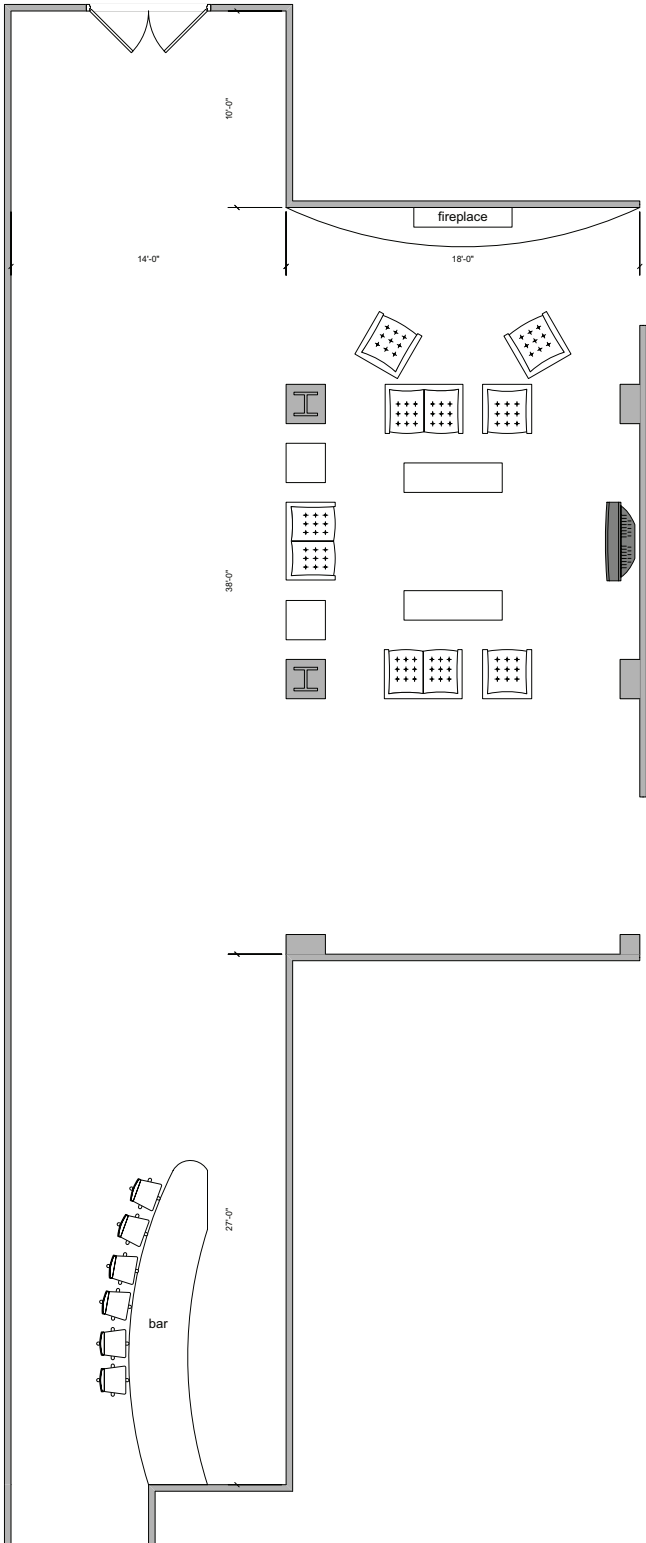
SCHRAMM CONFERENCE ROOM



Room Information:

Location:	Schramm Residence Hall
Type:	Conference Room
Square Footage:	252
Dimensions:	14' x 18'
Amenities:	Conference table Seating for up to 16 Dry Erase Board

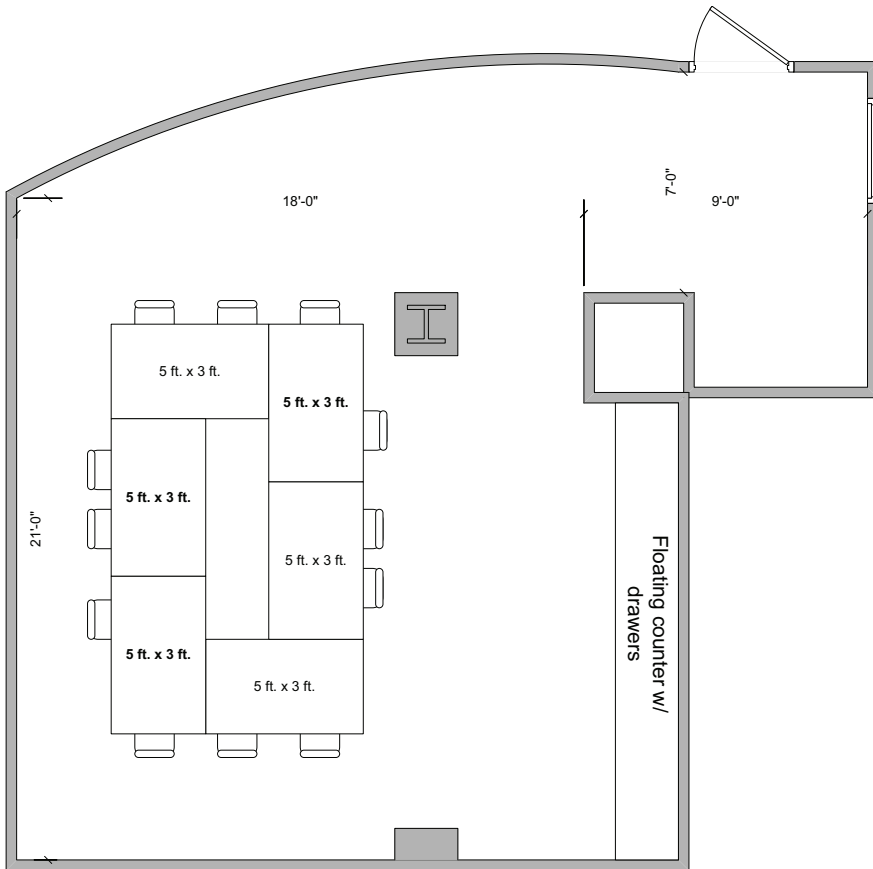
SCHRAMM LOUNGE



Room Information:

- Location: Schramm Residence Hall
- Type: Multipurpose Room
- Square Footage: 1216
- Dimensions: 32' x 38'
- Amenities: Comfortable seating
Small tables with chairs
Big Screen TV
Fireplace

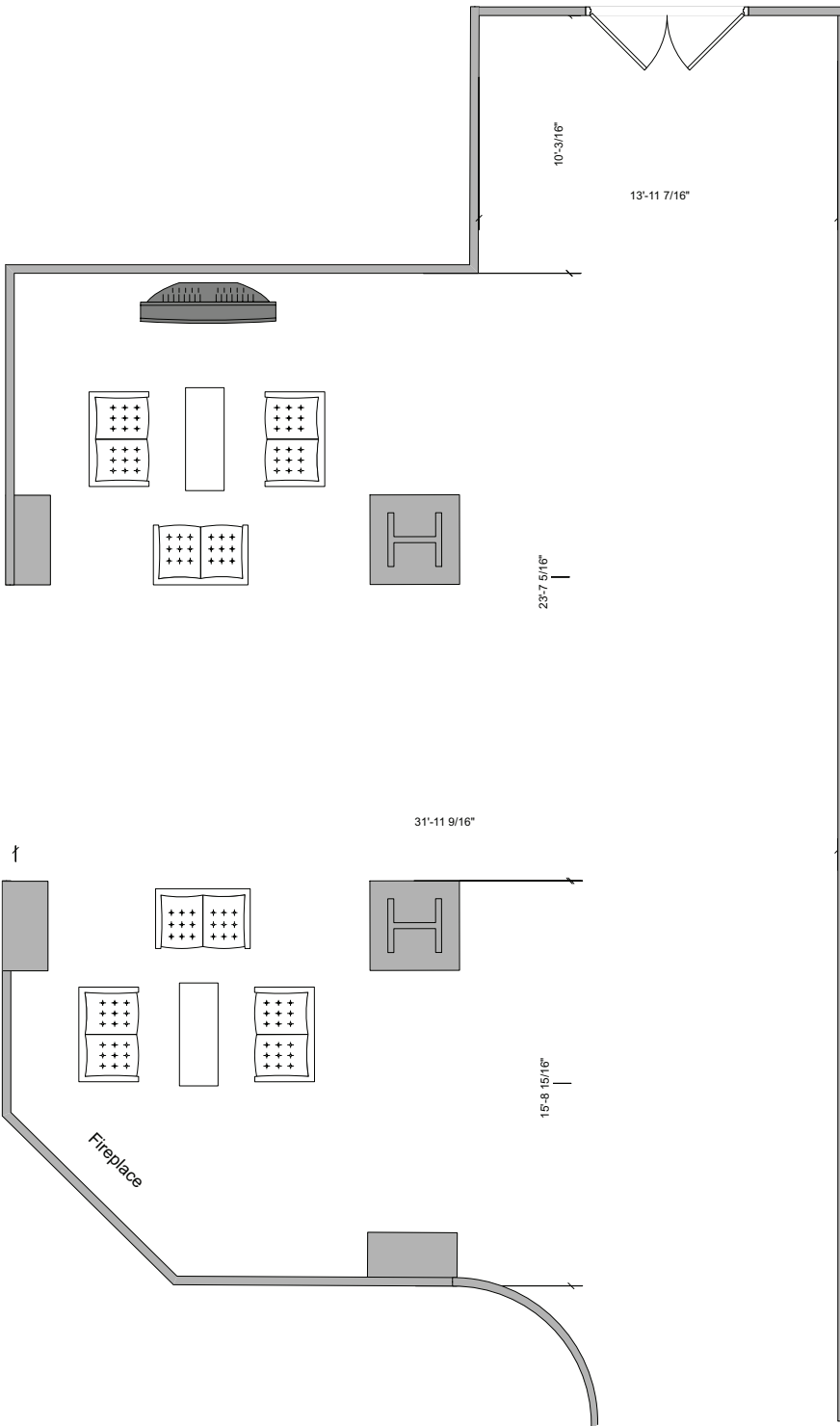
SMITH CONFERENCE ROOM



Room Information:

Location: Smith Residence Hall
Type: Conference Room
Square Footage: 252
Dimensions: 18' x 21'
Amenities: Conference table
Seating for up to 16
Dry Erase Board

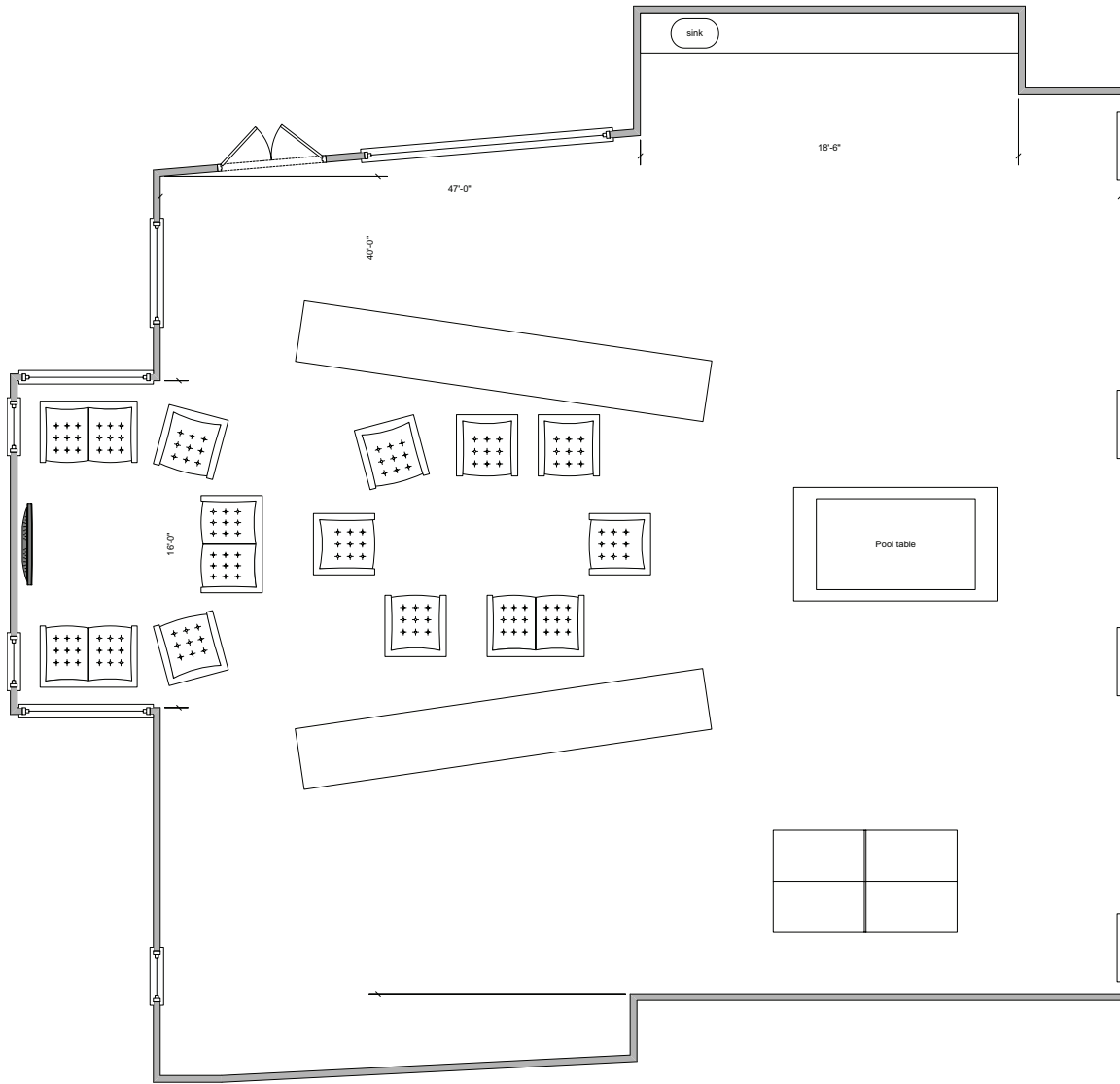
SMITH LOUNGE



Room Information:

Location: Smith Residence Hall
Type: Multipurpose Room
Square Footage: 1209
Dimensions: 31' x 39'
Amenities: Comfortable seating
Small tables with chairs
Big Screen TV
Fireplace

VILLAGE CLUBHOUSE



Room Information:

Location: Village Residence Hall

Type: Multipurpose Room

Square Footage: 1880

Dimensions: 40' x 47'

Amenities: Comfortable seating

Small tables with chairs

Counter and sink

Pool table

Table tennis table

Foosball table

Fireplace



Exceptional made simple.